

Save the Date!
Friday, May 9th
2025

111 State Street, Montpelier

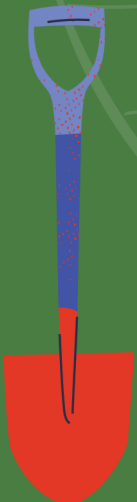


2nd Annual Introduced Invasive Species Network Gathering

Register Here:



Join CISMAs,
municipalities and
state agencies for
presentations and
discussions related to
this year's theme:
“Protecting What We
Care About”



Schedule



9:15-9:30 **Check in**

- Check in upon arrival and get yourself some coffee, tea and please find a seat by 9:30

9:30-9:40 **Welcome**

- Pieter van Loon, Forest Program Director at the Vermont Land Trust will offer opening remarks to help frame the day.

9:40-10:00 **Plant Health Overview**

- Emilie Inoue is the Plant Health Team Lead at the Agency of Agriculture, Food and Markets. She will share an overview of the Plant Health Section's role in introduced/invasive species management and how they are integrating a new philosophical approach and participating in a language/framing conversation.

10:00-10:20 **Pest Management at the Statewide Level**

- Noah Hoffman is the Invasive Species Coordinator at the Department of Forests, Parks and Recreation. He will provide a brief, state-level update on forest pests and early detection terrestrial plants of concern, and discuss some strategies to identify, map, and manage introduced/invasive species.

10:20-10:30 **BREAK**

- Coffee and tea available

10:30-11:00 **Knotweed Projects Panel**

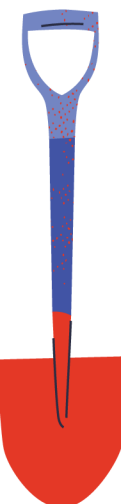
- Jito Coleman from the Mad River Valley Knotweed Project, Mary Walz from Knot in Hyde Park, and the Sarah Lunn from the Orleans County Cisma will share about their different knotweed projects around the state and some of the successes and challenges that they have faced along the way. Bring your knotweed questions for the Q and A portion of this session!

11:00-11:30 **Methods of Mapping**

- Isabel Bowman from the Southeast Cisma, Rachel Cliche and Jill Kilborn from the Upper Connecticut Cisma will share how they have used mapping in their respective projects to create a more effective management approach.

11:30-12:30 **LUNCH**

- Please either bring your own lunch or plan to visit one of many amazing food options nearby!



12:30-1:20 **Regional Discussion Groups**

- Facilitated by the organizers of the gathering, this will offer a chance to dig into the diverse ways that we take on introduced/invasive species management. In small groups, we will put in the work to connect with others doing this work in similar regions.

1:20-2:15 **Social Science: A Powerful Ally in Invasive Species Management.**

- Curt Lindberg, chair of the Waitsfield Conservation Commission and organizer of the Mad River Valley Knotweed Project will be sharing the story about the processes they've used to develop and sustain the community-based work in the Mad River Valley.

2:15-2:30 **Closing**

- Thank you and to be continued



About the Second Annual Introduced Invasive Species Network Gathering:

We invite anyone whose work involves introduced or invasive species management to join us for this upcoming event. The gathering has been collaboratively organized by Emilie Inoue (Agency of Agriculture, Food and Markets), Noah Hoffman (Department of Forests, Parks and Recreation), and Pieter van Loon and Sam Pierce (Vermont Land Trust). We look forward to creating space for shared learning, connection, and thoughtful conversation across disciplines and perspectives. Members of regional and state government and community organizations will be in attendance to participate in a day of listening and sharing ideas about how to improve invasive species management outcomes. We hope to pull together folks who work on invasive species management with various approaches and in different organizational settings, to facilitate a day of productive communication and collaboration around how best to accomplish our shared goals.



Thanks to the Brattleboro Food Co-op and the Hunger Mountain Co-op for their generous donations to help fuel our conversations today.