

# Emerald Ash Borer (EAB) Infested Area in Vermont

The shaded circles on this map delineate Vermont's EAB Infested Area. Each infested area represents a 10-mile radius around a known EAB infestation. While symptoms may not be obvious, it is likely that EAB is present in much of this area.

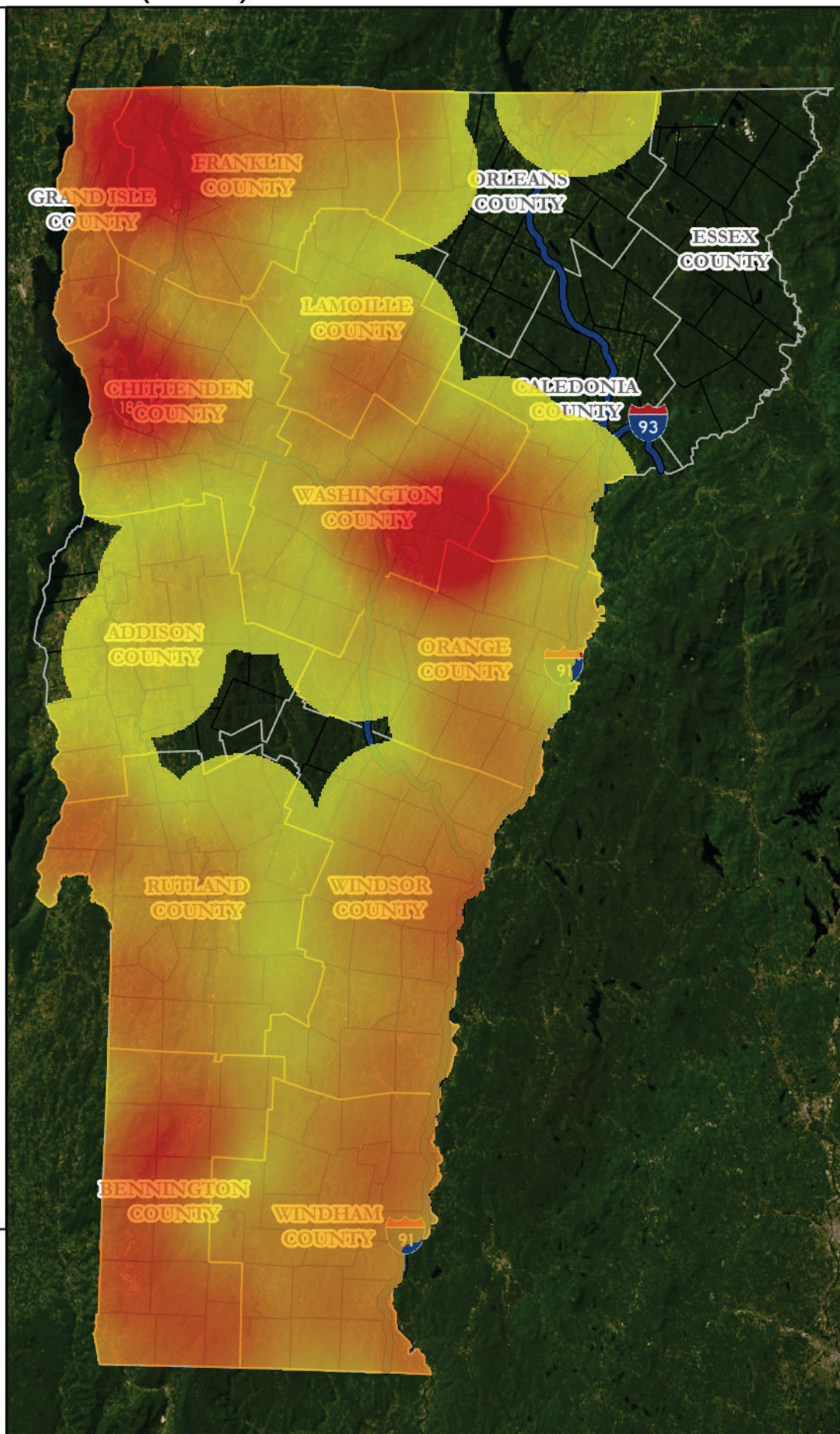
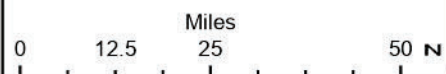
For each infested area, the relative EAB infestation severity is represented along a color spectrum. A yellow infested area indicates a less severe infestation. This map was last updated on 7/8/2025.

Lower severity infested areas are not yet showing infestation symptoms or decline but EAB has been found. A red infested area indicates a more severe infestation, multiple detections of EAB in a close area, or both. Higher severity infested areas are exhibiting visible infestation symptoms or tree death. The severity of infestation in each infested area will be assessed annually by staff from the Department of Forests, Parks, and Recreation and the map will be adjusted as needed.

EAB is not necessarily present throughout any given infested area, and it can rarely be found at low population densities. Often, by the time the insect is detected, it has already dispersed. Therefore, this map indicates the likelihood of EAB based on where it has actually been observed. Applying Slow the Spread recommendations reduces the risk of spreading EAB and provides time to conduct management activities.

## EAB Areas

### Relative Infestation Severity



This map of the EAB Infested Area was accurate as of 7/8/2025. The Infested Area will expand. Prior to basing action on the location of the Infested Area, visit [vtinvasives.org/eab](http://vtinvasives.org/eab) to confirm the current status of the EAB Infested Area.